

ODEX Enterprise

Communicate, integrate, manage



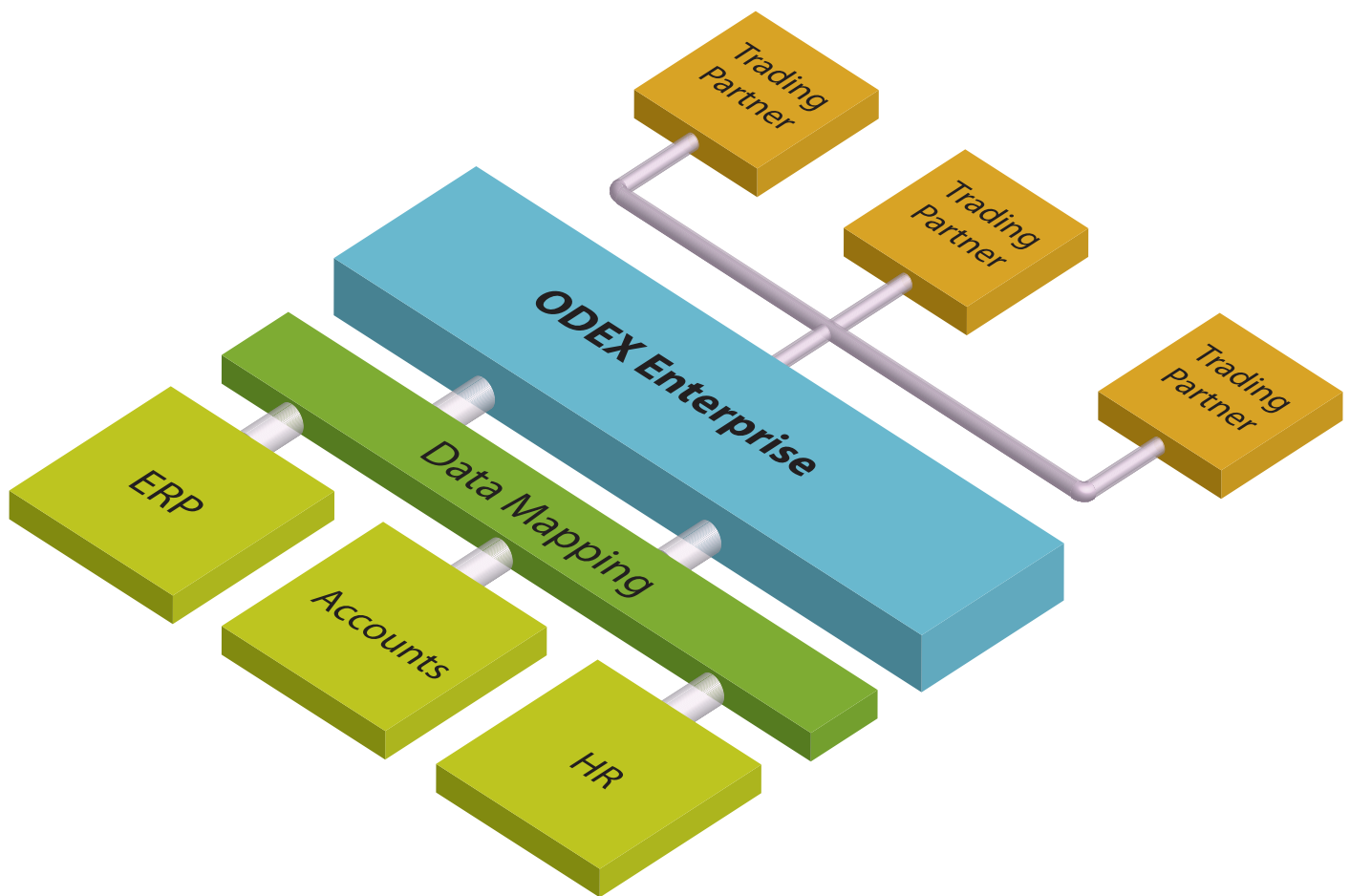
eBusiness Solutions



DATA INTERCHANGE PLC

All businesses need to exchange business documents reliably and efficiently, and face severe financial consequences if these documents are not exchanged. Orders not received and invoices not sent significantly effect your cash flow with potentially disastrous results. Exchanging data between your internal systems is often just as crucial with the same problems being faced.

ODEX Enterprise is an EDI integration manager for managing, processing, communicating and tracking the exchange of electronic business documents. It lets you replace your traditional paper based business processes with their electronic equivalents and automates your business processes so that they occur in the background with no interaction required. This means that your documents are exchanged almost instantly, using delivery receipts to ensure successful transmission and avoid any impact to your business.



The Solution

ODEX Enterprise integrates your disparate internal systems with each other and with those of your trading partners. Electronic documents, such as orders, sent from your trading partners can be automatically inserted into your internal systems without any interaction, re-keying of data or time delays.

ODEX Enterprise combines communications, workflow management, message translation, monitoring and tracking into a single cohesive application.

Workflow Management

ODEX Enterprise uses workflows to give you complete control when integrating your systems. Workflows let you perform custom business logic processing such as encrypting documents, sending emails, calling other applications etc. You can use ODEX Enterprise to pick up an invoice file produced by your accounting system, translate it into the EDI format of your trading partner, automatically send the file, and send an email to the accounts department to let them know that the invoice has been sent. You could even receive EDI orders from your trading partners, turn them into readable documents and have them instantly emailed to you as an attachment.

ODEX Enterprise can be used for many different business scenarios and you'll find more reasons to use ODEX as your business develops. You can use ODEX for exchanging EDI documents with your trading partners, integrating internal applications, as an EDI hub, as the basis of a commercial VAN (Value Added Network), or for exchanging CAD/CAM data. The scenarios are limited only by your requirements and creativity.



Workstation

File View Actions Tools Help

Inbound Files Outbound Files Errors Archive Received Files Scheduled Files Sent Files

Inbound Files - <All Dates> Default

File ID	Import Date/Time	Originator	Destination	Original Filename	Status	Comms Status	Processing End Date/Time	Error Status
16779...	25/10/07 12:49:35	Peterborough Steel	DF Fastenings	GAL25A0033 25/1...	Processed	Multiple com...	25/10/07 12:49:35	None
16779...	25/10/07 12:46:01	Peterborough Steel	Fore Engines	ODT.FORE.EN...	Processed	Multiple com...	25/10/07 12:46:01	None
16779...	25/10/07 12:45:57	Peterborough Steel	Fore Engines	ODT.GEIS 25/10/...	Processed	Multiple com...	25/10/07 12:45:58	None
16779...	25/10/07 12:44:53	Peterborough Steel	DF Fastenings	DVFASN 22/10 ...	Processed	Multiple com...	25/10/07 12:45:17	None
16779...	25/10/07 12:44:04	Peterborough Steel	ERP System	ODEX.OUT.DESV...	Processed	Multiple com...	25/10/07 12:44:10	None
16779...	25/10/07 12:43:52	Peterborough Steel	Fore Engines	ODT.FORE.EN...	Processed	Multiple com...	25/10/07 12:43:53	None
16779...	25/10/07 12:43:49	Peterborough Steel	Fore Engines	ODT.FORE.EN...	Processed	Multiple com...	25/10/07 12:43:49	None
16779...	25/10/07 12:43:38	Peterborough Steel	Fore Engines	ODT.FORE.EN...	Processed	Multiple com...	25/10/07 12:43:39	None
16779...	25/10/07 12:42:30	Peterborough Steel	Customer CRM	ODT.MSG_SNOP...	Processed	Multiple com...	25/10/07 12:42:31	None
16779...	25/10/07 12:42:29	Peterborough Steel	Customer CRM	ODT.MSG_SNOP...	Processed	Multiple com...	25/10/07 12:42:30	None
16779...	25/10/07 12:42:28	Peterborough Steel	Customer CRM	ODT.MSG_SNOP...	Processed	Multiple com...	25/10/07 12:42:29	None
16779...	25/10/07 12:42:28	Peterborough Steel	Customer CRM	ODT.MSG_SNOP...	Processed	Multiple com...	25/10/07 12:42:28	None
16779...	25/10/07 12:42:27	Peterborough Steel	Customer CRM	ODT.MSG_SNOP...	Processed	Multiple com...	25/10/07 12:42:28	None
16779...	25/10/07 12:42:23	Peterborough Steel	Accounting APP	ORDER9664/1...	Processed	Multiple com...	25/10/07 12:42:29	None
16779...	25/10/07 12:42:20	Peterborough Steel	DF Fastenings	DVFASN 25/10/20...	Processed	Multiple com...	25/10/07 12:42:21	None
16779...	25/10/07 12:42:18	Peterborough Steel	Customer CRM	ODT.MSG_SNOP...	Processed	Multiple com...	25/10/07 12:42:18	None
16779...	25/10/07 12:42:18	Peterborough Steel	Customer CRM	ODT.MSG_SNOP...	Processed	Multiple com...	25/10/07 12:42:18	None
16779...	25/10/07 12:42:17	Peterborough Steel	ERP System	ODT.MSG_SNOP...	Processed	Multiple com...	25/10/07 12:42:18	None
16779...	25/10/07 12:42:17	Peterborough Steel	ERP System	ODT.MSG_SNOP...	Processed	Multiple com...	25/10/07 12:42:17	None
16779...	25/10/07 12:42:09	Peterborough Steel	Tudor Systems	ODT.MSG_SNOP...	Processed	Multiple com...	25/10/07 12:42:09	None
16779...	25/10/07 12:42:07	Peterborough Steel	ERP System	ODT.MSG_SNOP...	Processed	Multiple com...	25/10/07 12:42:07	None
16779...	25/10/07 12:41:40	Peterborough Steel	Tudor Systems	00001824.CMS 2...	Processed	Multiple com...	25/10/07 12:41:40	None

Function	Summary	Return Code	Action	Channel	Workflow	Start	End
Matched to channel	Associating file with channel [Forward Files Ch...	OK	Continue	Forward Files ...		25/10/07 12:43:49	25/10/07 12:43:49
Analyse	File analysed successfully. File contains 1 inter...	OK - EDI	Continue	Forward Files ...	Forward Files ...	25/10/07 12:43:49	25/10/07 12:43:49
Schedule	File Scheduled	OK	Continue	Forward Files ...	Forward Files ...	25/10/07 12:43:49	25/10/07 12:43:49
Wait for Transmission	All files have been successfully sent	OK	Continue	Forward Files ...	Forward Files ...	25/10/07 12:43:49	25/10/07 12:43:49
Processed	Marking file as processed	OK	Continue	Forward Files ...		25/10/07 12:43:49	25/10/07 12:43:49

Connected Server: ODEX Enterprise Machine: dinetwin Username: Johnk

Flexible Communications

All the latest communication protocols are tightly integrated within ODEX Enterprise so that you can communicate with your trading partners regardless of their market sector or communications capability, and removes the need to maintain multiple computer systems for different protocols.

ODEX Enterprise provides robust communication links and uses delivery receipts to provide confirmation of delivery of your files. ODEX Enterprise provides a communications resume capability in the case of a dropped connection so that your file exchanges continue from the point at which the connection dropped, rather than starting the file exchange from the beginning. ODEX Enterprise supports automated connection retries and automatic switching to backup communication links if connection problems persist, so you can be certain that your files will get through.

The capacity to extend ODEX Enterprise's communication ability guarantees ODEX Enterprise is a cost effective and future proof solution.

Enterprise Scalability

You can use ODEX Enterprise in any size of business, from small businesses exchanging only a few documents a month, right up to large international corporations exchanging thousands of documents a month. The client-server architecture lets multiple users share the same view of the data and to operate ODEX from different geographical locations. ODEX Enterprise uses a high performance and scalable database allowing it to handle the most demanding of high volume scenarios.

In scenarios where any system downtime carries serious financial impact, ODEX Enterprise provides disaster recovery functionality, so in the event problems occur, operation immediately switches to a backup machine. This is achieved by supporting Windows 2003 Server clustering, which monitors ODEX Enterprise to ensure that is responsive.

Visibility And Monitoring

For auditing requirements or for keeping abreast of your integration environment, ODEX Enterprise provides you with a complete audit trail of all processing and communications session letting you easily trace the progress of business critical files as they pass between your systems. Any operational issues can be traced back and resolved before your business is impacted. You can setup a variety of monitoring processes to provide instant feedback to your users via email or SNMP traps.

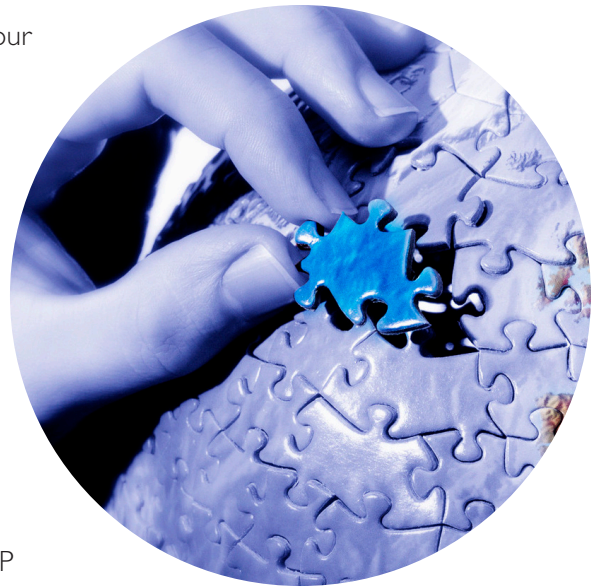
Secure your EDI over the Internet

ODEX Enterprise protects your confidential business data using the latest cryptographic techniques including data encryption and digital signatures. You can benefit from the low costs of the Internet and its high bandwidth with none of the security risks - no longer do you need to use legacy point to point networks such as X.25 or ISDN or use difficult to setup and expensive VPNs to secure your data.



Mapping

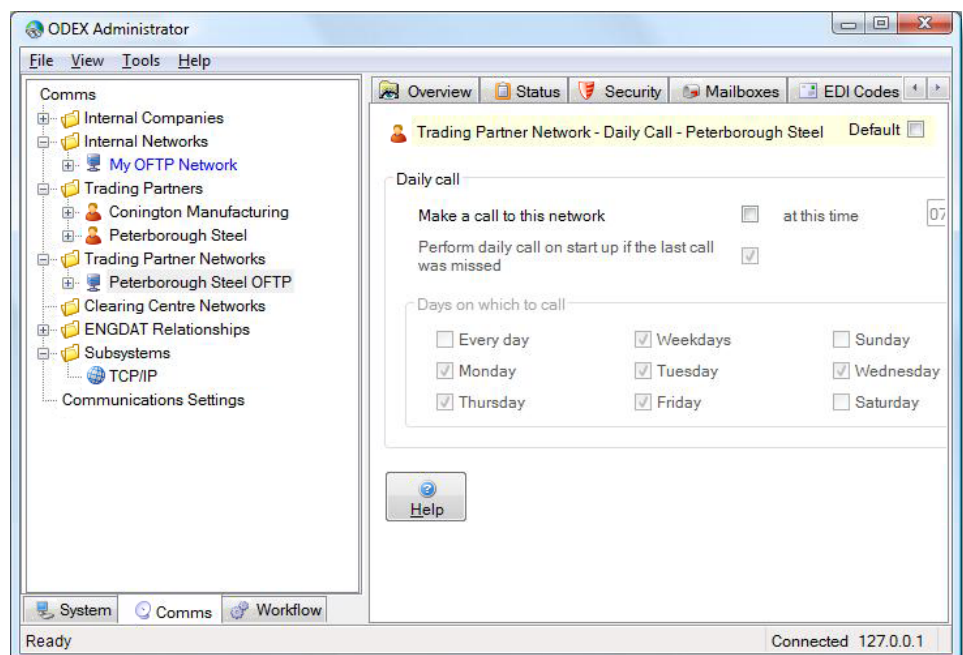
ODEX Enterprise is tightly integrated with XLATE Evolution, our powerful Any to Any mapper, that enables you to translate messages into the correct format for the target system, removing the issue of incompatible file formats between internal systems and trading partners. ODEX Enterprise is capable of translating almost any file format imaginable and is also capable of performing conditional mapping, arithmetic operations and hierarchy changes.



Specialist Integration

ODEX Enterprise also provides specialised SAP integration, delivering EDI capability to your SAP systems. The integration offered by ODEX Enterprise enables EDI data to flow between SAP and your trading partners, whilst also allowing SAP to monitor the status of outgoing files.

Easily configure new trading partners and configure schedules to call them



ENGDAT

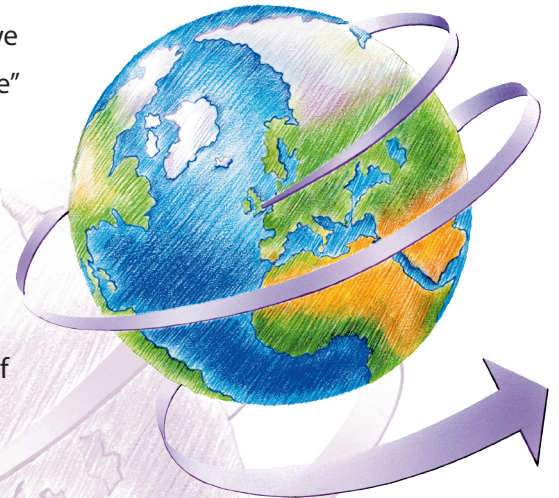
ODEX Enterprise has a specialised ENGDAT component to help you exchange CAD/CAM design drawings and other data related to the engineering design process with your trading partners. ODEX Enterprise lets you send and receive ENGDAT messages which contain information about the drawings and contact details and provides you with trading partner specific validation profiles to ensure that your ENGDAT message always contains the correct information required by your trading partner. All versions of ENGDAT are supported (v1, v2, v3).

"With ODEX Enterprise we have more possibilities for EDI connections with our customers and suppliers. The configuration of these connections is very easy we can decide how we connect. We are extremely happy with ODEX Enterprise"

**Eusebio Llesma, IT Manager, Schefenacker Vision Systems
España**

"We were looking for a communications package that could support our business, with the flexibility to integrate with our own software. ODEX Enterprise has performed that task very well and has become an integral part of our communications process."

Paul Bower, IT Manager, Fenmarc



Features

- ✓ SNMP
- ✓ Workflows
- ✓ Scheduler
- ✓ Smartcard support
- ✓ Workflows
- ✓ Data security
- ✓ Client / server
- ✓ Communication protocols
- ✓ ISDN, XOT (X.25), TCP/IP, VPN, ENX
- ✓ CAPI 2 and R-CAPI
- ✓ ENGDAT
- ✓ EBCDIC conversion
- ✓ .NET API
- ✓ Batch interface
- ✓ Clustering
- ✓ SQL Server 2005 database
- ✓ Active Directory security
- ✓ VAN support
- ✓ SAP integration

EDI Standards

- ✓ ANSI X12
- ✓ EANCOM
- ✓ EDIFACT
- ✓ ODETTE
- ✓ TRADACOMS
- ✓ VDA
- ✓ XML
- ✓ CSV

Protocols

- ✓ OFTP 2
- ✓ OFTP
- ✓ AS2
- ✓ SFTP
- ✓ FTP
- ✓ MQ Series
- ✓ X.400 P1/P2

Contact Details

United Kingdom, Peterborough

☎ +44 (0) 1733 371 311

Spain, Madrid

☎ +34 915030414

Sweden, Gothenburg

☎ +46 322 935 25

Email: sales@di-international.com

Internet: www.di-international.com