

# **XLATE** **Evolution**

*Integrate, map, translate, investigate*

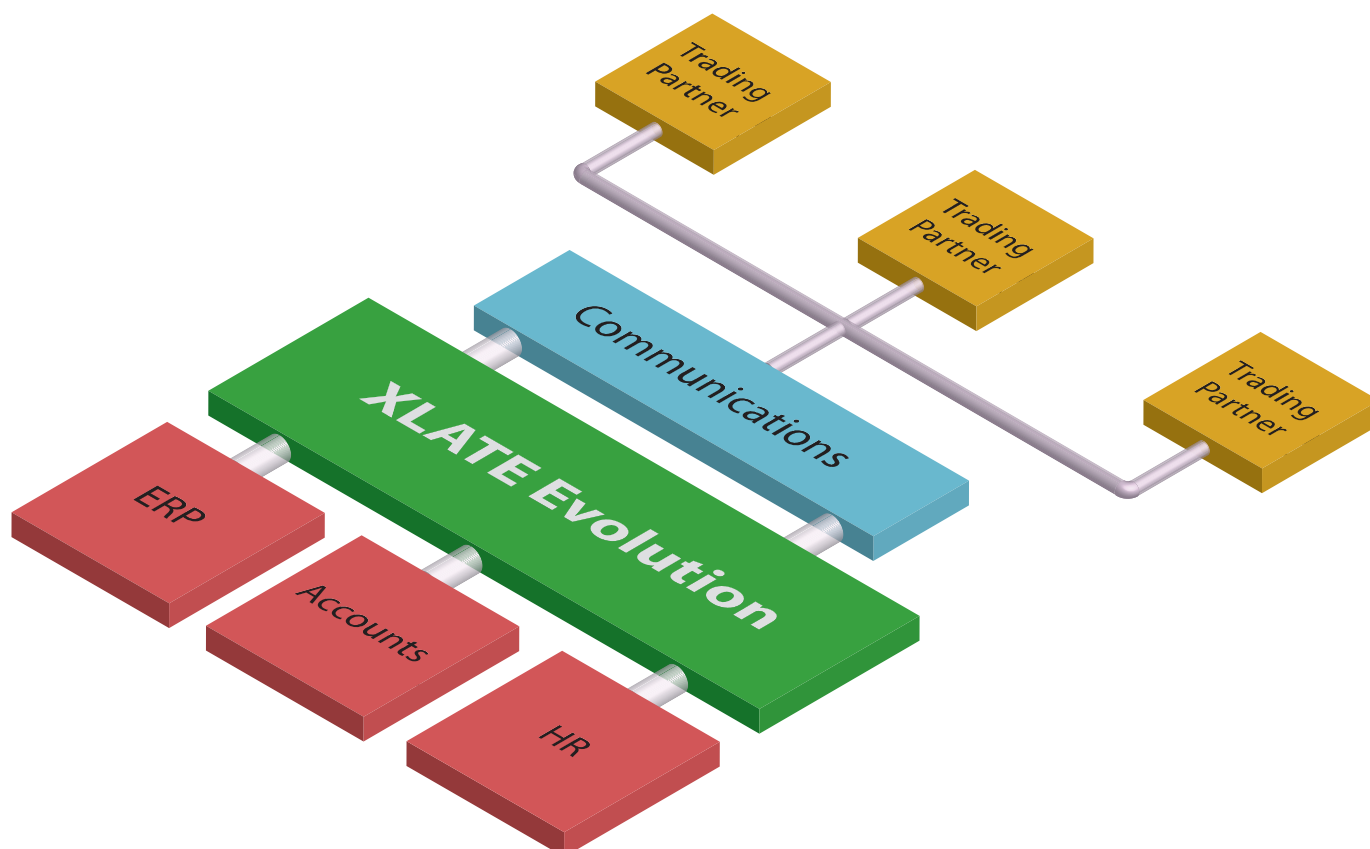


eBusiness Solutions



**D A T A I N T E R C H A N G E P L C**

XLATE Evolution is a powerful, intuitive any-to-any mapper that enables companies to integrate their internal applications and systems with those of their trading partners. It improves productivity by providing an integrated development environment, a sophisticated drag and drop mapping interface, a forms designer, an EDI document explorer and support for all common EDI file formats. XLATE Evolution is easy to learn and deploy so you can quickly create mappings, without a long induction period, lowering the costs necessary to exploit the benefits of EDI.



## Integrate your business processes

XLATE Evolution easily slots into your existing B2B infrastructure to integrate all your internal systems with each other or with those of your trading partners. It can also be used in conjunction with our other products to create a powerful and tightly integrated trading environment, providing workflow functionality, messaging, global data synchronisation and order processing.

The XLATE Evolution development environment allows you to design all your integrations away from a production environment and to then implement them using the high performance runtime component. This allows safe development whilst being able to quickly deploy your integrations.

## Fast development

XLATE Evolution provides all the features and functions to help you produce a mapping quickly. When a trading partner sends you an EDI file you can use the document explorer to see what standard is being used and verify the data content. You can choose a format definition from the eCommerce standards library and then 'drag and drop' to create your map. At any stage you can test the map against the input document to check the output.

## Create mappings visually

Create your maps in an easy and graphical way with a visual representation of the mapping on the screen. There is no need to waste time writing scripts and you can also incorporate advanced logic functions by simply dragging them onto your map.

## Code snippets

Take advantage of the unlimited flexibility of code snippets within XLATE Evolution, allowing you to insert program code (C# or VB .NET) at key points within a mapping. The inbuilt compiler gives access to all the APIs furnished under the Microsoft .NET Framework, giving you the tools to perform very complicated mappings with ease.

Sometimes an important trading partner implements an eCommerce standard in a slightly non standard manner. XLATE Evolution easily handles such cases; however there may come a time where a few lines of program code are required and this is where the power of code snippets comes to the rescue.



The screenshot displays the XLATE Evolution Mapper interface. The main window shows a visual mapping between source and target data structures. The source structure on the left includes UNB (Interchange header) and UNG (Group header) segments. The target structure on the right includes UNB (Interchange Header), MESSG (Message), NAD (Name and Address), and LIN (Product Item) segments. The mapping is visualized as a series of lines connecting source nodes to target nodes. A logic function is applied to the mapping, and the Properties window shows the details for the selected logic function.

Source	Value	Target	Value
Tag	S006		
Description	Application sender identifi...		
Requirement	Conditional		
Instance name	UNG102		

Logic functions:

- Logic.Or
- Logic.And
- Logic.Equal
- Logic.NotEqual
- Logic.GreaterThan
- Logic.LessThan
- Logic.GreaterThanOrEqual
- Logic.LessThanOrEqual
- Logic.Range

## eCommerce standards dictionaries

XLATE Evolution contains a broad selection of eCommerce standards in common usage in every market sector. You can use the standard of your choice without having to create it yourself.

## Document explorer

Thoroughly examine your file content with the document explorer. The document explorer displays EDI files in a user-friendly format, allowing you to examine EDI data in raw or hierarchical views. It adds meaning to a file by highlighting errors in syntax and structure, making it easier to pinpoint errors and saving you the hassle of interpreting complicated EDI files.

## Complete EDI solution

XLATE Evolution allows automated mapping of incoming files and automated transmission of mapped outgoing files when integrated with other Data Interchange software packages, making your workflow more streamlined and saving you time.

## Encryption and digital signatures

XLATE Evolution has full support for digital security certificates allowing key commercial documents such as orders and invoices to be digitally signed when they are created for sending to a trading partner; this is very important in this era of the electronic invoice and the various countries' legislative requirements.

When a signed electronic document is received, the digital signature can be verified and matched against the identification of the purported originator of the document. Not only does the security module support signatures, but also encryption to stop anybody other than the intended recipient viewing the content. This is of great commercial benefit if you are sending and receiving your electronic documents via an intermediary Value Added Network.

## Financial benefits

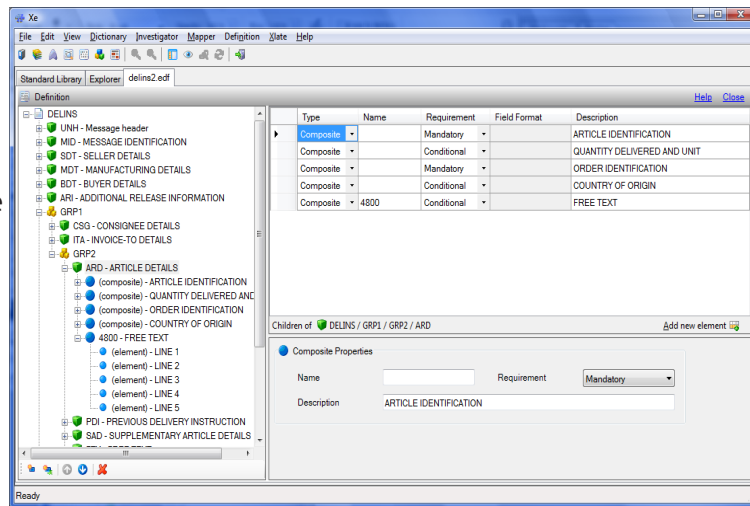
XLATE Evolution takes the hard work out of data conversion. Every new trading partner usually requires either a new mapping or a modification to an existing mapping. As XLATE Evolution is so intuitive and flexible it reduces the need to maintain costly B2B eCommerce skills and expertise within a company. The ability to react quickly to the changes of your trading partners reinforces the professional image of your company.



## Easily design data definitions

Using the XLATE Evolution data definition editor you are able to define the layout of in-house files, XML documents and EDI messages. The definition editor provides an easy way to describe complex data structures which are used within XLATE Evolution when developing a map between two data definitions. EDI document definitions may be created automatically from the standards libraries provided with XLATE Evolution and can be modified if required.

Visually create an EDIFACT message definition file using the data definition editor.

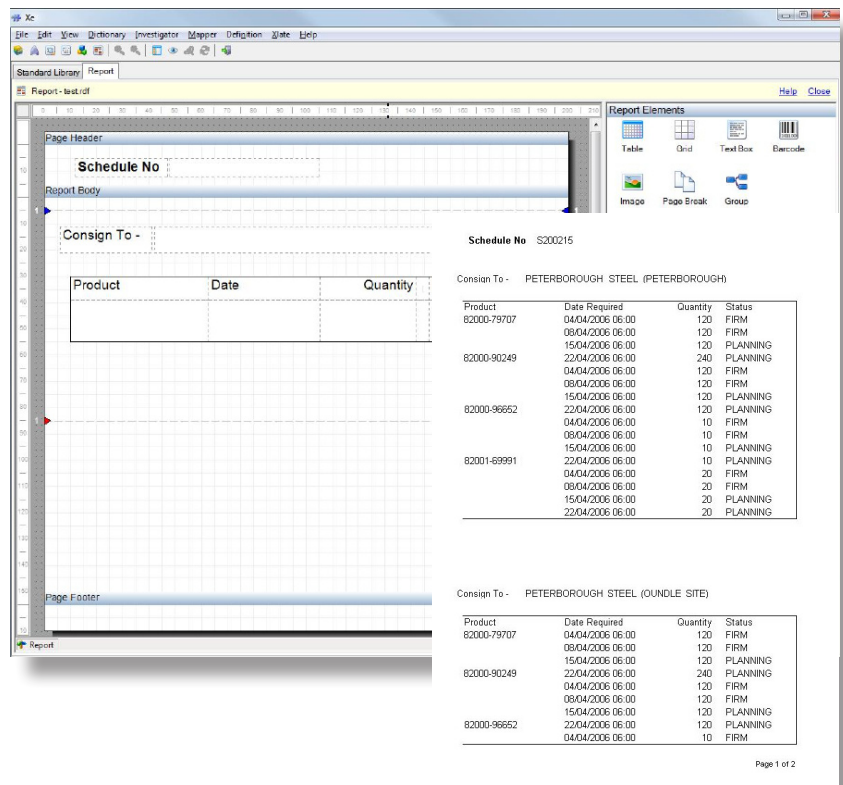


## Forms designer

The forms designer allows you to take an EDI document and quickly turn it into a human readable document that can be printed or saved. The scenarios this covers are endless, be it the conversion of an EDI invoice to a PDF to be sent by email, a delivery forecast to be printed at the warehouse or the creation of transport labels from a despatch advice.

Using a simple drag and drop interface you can quickly design layouts for custom reports, labels and barcodes. Then simply use the XLATE Evolution mapping interface to fill your form with data, using all the tools and features of XLATE Evolution with which you are accustomed.

For many users, the forms designer helps demystify electronic commerce, allowing you to produce human-readable versions of EDI transactions that resemble traditional paper documents.



"I am extremely happy with XLATE Evolution! It is very powerful and uses an ingenious concept of drag and drop, which means that I don't have to write lots of scripts."

**Gerhard Spies, Managing Director, EdiServ Pty Ltd**

"We've been able to create lots of maps in a very short space of time. XLATE Evolution makes EDI so easy and it has all the features we could ever want."

**Eusebio Lluesma, Schefenacker Vision Systems**



## Features

- ✓ Any to Any mapping
- ✓ Comprehensive standards libraries
- ✓ EDI document explorer
- ✓ EDI definition editor
- ✓ Forms designer for reports and transport labels
- ✓ Integrate with ERP/ MRP packages
- ✓ Barcode support
- ✓ Scalable
- ✓ Code snippets
- ✓ Draggable functions
- ✓ EBCDIC conversion
- ✓ UNICODE support
- ✓ Digital signatures
- ✓ Document encryption
- ✓ SAP IDoc
- ✓ Web Services support

## EDI Standards

- ANSI X12
- EANCOM
- EDIFACT
- EDIFACT V4
- ODETTE
- TRADACOMS
- VDA
- XML
- ebXML
- SAP IDoc
- CSV
- UCS

## Contact Details

United Kingdom, Peterborough

☎ +44 (0) 1733 371 311

Spain, Madrid

☎ +34 915030414

Sweden, Gothenburg

☎ +46 322 935 25

Email: [sales@di-international.com](mailto:sales@di-international.com)

Internet: [www.di-international.com](http://www.di-international.com)